

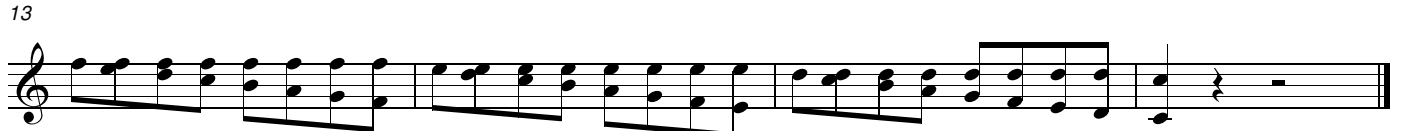
Basic Front Ensemble Exercises

Marimba - Vibes - Xylo

compiled by Michael Huestis

Diatonic Double Stops

$\text{♩} = 160$



Can be transposed into all 12 keys

Scales & Arpeggios



L R L R ...

transpose in all 12 keys

"Green" Scales



Transpose in all 12 keys

Basic Front Ensemble Exercises

28 4 Mallet - Double Vertical Strokes

32

36

39

43

46

4 Mallet - Single Independent Strokes

50

Transpose up by 1/2 step - C, Db, D, Eb, etc

Basic Front Ensemble Exercises

54 4 Mallet - Chord Progression

Key of C

Transpose in circle of 4ths - F, Bb, Eb, etc

1 Sticking Permutations to use with Chord Progression

1 2 3 4

4 3 2 1

2

3

1 2 4 3

4

5

1 2 3 4 3 2

3

6

7

4 3 2

3

3

3

8

9

3 4 1

3

3

3

10

11

1 3 2 4

12

13

3 2 4 1

14

14

4 2 3 1

Basic Drumline Warm-ups - Snares

Checkerboard Rolls

Musical notation for Checkerboard Rolls, consisting of four measures of eighth-note rolls alternating between right and left hands, followed by a final measure with a single right-hand note.

RLRLRLRL RLRLRLRL RLRLRLRL RLRLRLRL R

SIXTEENTH NOTE TIMING

Musical notation for Sixteenth Note Timing, consisting of four measures of sixteenth-note patterns. The first measure is a continuous roll. The second and third measures are divided into two parts, labeled 1. and 2. respectively, showing different rhythmic groupings. The fourth measure is a single right-hand note.

RLRLRLRLRLRLRLRL RLRLRLRLRLRLRL RLRLRLRLRLRLRL RLRLRLRLRLRLRL

Musical notation for Sixteenth Note Timing (continued), consisting of two measures of sixteenth-note patterns. The first measure is a continuous roll. The second measure is divided into two parts, labeled 3. and 4. respectively, showing different rhythmic groupings. The fourth measure is a single right-hand note.

RLRLRLRLRLRLRLRL RLRLRLRLRLRLRL RLRLRLRLRLRLRL RLRLRLRLRLRLRL

STICK CONTROL

Musical notation for Stick Control, consisting of four measures of sixteenth-note patterns. The first measure is a continuous roll. The second and third measures are divided into two parts, labeled 1. and 2. respectively, showing different rhythmic groupings. The fourth measure is a single right-hand note.

RLRLRLRLRLRLRLRL RLRLRLRLRLRLRL RLRLRLRLRLRLRL RLRLRLRLRLRLRL

Musical notation for Stick Control (continued), consisting of two measures of sixteenth-note patterns. The first measure is a continuous roll. The second measure is divided into two parts, labeled 3. and 4. respectively, showing different rhythmic groupings. The fourth measure is a single right-hand note.

RLRLRLRLRLRLRLRL RLRLRLRLRLRLRL RLRLRLRLRLRLRL RLRLRLRLRLRLRL

16th NOTE DIDDLE

Musical notation for 16th Note Diddle, consisting of three measures of sixteenth-note patterns. The first measure is a continuous roll. The second and third measures are divided into two parts, labeled 1. and 2. respectively, showing different rhythmic groupings. The fourth measure is a single right-hand note.

RLRLRLRLRL RLRLRLRLRL RLRLRLRLRL RLRLRLRLRL

Musical notation for 16th Note Diddle (continued), consisting of three measures of sixteenth-note patterns. The first measure is a continuous roll. The second and third measures are divided into two parts, labeled 4. and 5. respectively, showing different rhythmic groupings. The fourth measure is a single right-hand note.

RLRLRLRLRL RLRLRLRLRL RLRLRLRLRL RLRLRLRLRL

Basic Drumline Warm-ups

Tenors

Compiled By Michael Huestis

8 ON A HAND

Musical notation for '8 ON A HAND' in 4/4 time. The first staff shows a sequence of eighth notes: R (right hand) for the first four beats and L (left hand) for the next four beats. The second staff continues with R for the first four beats and L for the next four beats.

5

Musical notation for '8 ON A HAND' continuation. The first staff shows R for the first four beats and L for the next four beats. The second staff shows R for the first four beats, L for the next four beats, and a final R on the fifth beat.

Bucks

10

Musical notation for 'Bucks' in 4/4 time. The first staff shows eighth notes with accents (>) for R and L hands. The second staff continues with R and L hands, ending with a final R on the fifth beat.

Double & Triple Beat

Musical notation for 'Double & Triple Beat' in 4/4 time. The first staff shows eighth notes for R and L hands. The second staff continues with eighth notes for R and L hands, ending with a final R on the fifth beat.

Musical notation for 'Double & Triple Beat' continuation. The first staff shows eighth notes for R and L hands. The second staff shows eighth notes for R and L hands, ending with a final R on the fifth beat.

Hup - Dup

Musical notation for 'Hup - Dup' in 4/4 time. The first staff shows eighth notes for R and L hands. The second staff shows eighth notes for R and L hands, ending with a final R on the fifth beat.

Musical notation for 'Hup - Dup' continuation. The first staff shows eighth notes for R and L hands. The second staff shows eighth notes for R and L hands, ending with a final R on the fifth beat.

Tom's Taps

Musical notation for 'Tom's Taps' in 4/4 time. The first staff shows eighth notes with accents (>) for R and L hands. The second staff shows eighth notes with accents (>) for R and L hands, ending with a final R on the fifth beat.

Basic Drumline Warm-ups - Tenors

Checkerboard Rolls

Checkerboard Rolls drum notation: A single staff with a treble clef and a double bar line. The notation consists of four measures of eighth notes, each measure containing a pair of eighth notes (RL). The fifth measure contains a quarter rest followed by a quarter note. The rhythm is indicated by the letters R and L below the staff.

RLRLRLRL RLRLRLRL RLRLRLRL RLRLRLRL R

SIXTEENTH NOTE TIMING

SIXTEENTH NOTE TIMING drum notation: A single staff with a treble clef and a double bar line. The notation consists of four measures of sixteenth notes. The first measure contains a pair of sixteenth notes (RL). The second measure contains a pair of sixteenth notes (RL). The third measure contains a pair of sixteenth notes (RL). The fourth measure contains a pair of sixteenth notes (RL). The rhythm is indicated by the letters R and L below the staff.

RLRLRLRLRLRLRLRL RLRLRLRLRLRLRLRL RLRLRLRLRLRLRLRL RLRLRLRLRLRLRLRL

SIXTEENTH NOTE TIMING drum notation: A single staff with a treble clef and a double bar line. The notation consists of four measures of sixteenth notes. The first measure contains a pair of sixteenth notes (RL). The second measure contains a pair of sixteenth notes (RL). The third measure contains a pair of sixteenth notes (RL). The fourth measure contains a pair of sixteenth notes (RL). The rhythm is indicated by the letters R and L below the staff.

RLRLRLRLRLRLRLRL RLRLRLRLRLRLRLRL RLRLRLRLRLRLRLRL RLRLRLRLRLRLRLRL

STICK CONTROL

STICK CONTROL drum notation: A single staff with a treble clef and a double bar line. The notation consists of four measures of sixteenth notes. The first measure contains a pair of sixteenth notes (RL). The second measure contains a pair of sixteenth notes (RL). The third measure contains a pair of sixteenth notes (RL). The fourth measure contains a pair of sixteenth notes (RL). The rhythm is indicated by the letters R and L below the staff.

RLRLRLRLRLRLRLRL RLRLRLRLRLRLRLRL RLRLRLRLRLRLRLRL RLRLRLRLRLRLRLRL

STICK CONTROL drum notation: A single staff with a treble clef and a double bar line. The notation consists of four measures of sixteenth notes. The first measure contains a pair of sixteenth notes (RL). The second measure contains a pair of sixteenth notes (RL). The third measure contains a pair of sixteenth notes (RL). The fourth measure contains a pair of sixteenth notes (RL). The rhythm is indicated by the letters R and L below the staff.

RLRLRLRLRLRLRLRL RLRLRLRLRLRLRLRL RLRLRLRLRLRLRLRL RLRLRLRLRLRLRLRL

16th NOTE DIDDLE

16th NOTE DIDDLE drum notation: A single staff with a treble clef and a double bar line. The notation consists of four measures of sixteenth notes. The first measure contains a pair of sixteenth notes (RL). The second measure contains a pair of sixteenth notes (RL). The third measure contains a pair of sixteenth notes (RL). The fourth measure contains a pair of sixteenth notes (RL). The rhythm is indicated by the letters R and L below the staff.

RLRLRLRLRLRLRLRL RLRLRLRLRLRLRLRL RLRLRLRLRLRLRLRL RLRLRLRLRLRLRLRL

16th NOTE DIDDLE drum notation: A single staff with a treble clef and a double bar line. The notation consists of four measures of sixteenth notes. The first measure contains a pair of sixteenth notes (RL). The second measure contains a pair of sixteenth notes (RL). The third measure contains a pair of sixteenth notes (RL). The fourth measure contains a pair of sixteenth notes (RL). The rhythm is indicated by the letters R and L below the staff.

RLRLRLRLRLRLRLRL RLRLRLRLRLRLRLRL RLRLRLRLRLRLRLRL RLRLRLRLRLRLRLRL

Basic Drumline Warm-ups

Basses

Compiled By Michael Huestis

8 ON A HAND

Musical notation for the first exercise, '8 ON A HAND'. It consists of a single staff with a 4/4 time signature. The notation shows a continuous eighth-note pattern across the entire staff, starting with a double bar line and ending with a repeat sign.

Musical notation for exercise 5. It consists of a single staff with a 4/4 time signature. The notation shows a continuous eighth-note pattern across the entire staff, starting with a double bar line and ending with a repeat sign.

Bucks

Musical notation for the 'Bucks' exercise. It consists of a single staff with a 4/4 time signature. The notation shows a series of eighth notes with accents, alternating between the right (R) and left (L) hands. The pattern is: R, L, R, L, R. The exercise ends with a double bar line and a repeat sign.

Double & Triple Beat

Musical notation for the 'Double & Triple Beat' exercise. It consists of a single staff with a 4/4 time signature. The notation shows a series of eighth notes with accents, alternating between the right (R) and left (L) hands. The pattern is: R, L, R, L, R. The exercise ends with a double bar line and a repeat sign.

Musical notation for exercise 2. It consists of a single staff with a 4/4 time signature. The notation shows a series of eighth notes with accents, alternating between the right (R) and left (L) hands. The pattern is: R, L, R, L, R. The exercise ends with a double bar line and a repeat sign.

Hup - Dup

Musical notation for the 'Hup - Dup' exercise. It consists of a single staff with a 4/4 time signature. The notation shows a series of eighth notes with accents, alternating between the right (R) and left (L) hands. The pattern is: R, L, R, L, R. The exercise ends with a double bar line and a repeat sign.

Musical notation for exercise 6. It consists of a single staff with a 4/4 time signature. The notation shows a series of eighth notes with accents, alternating between the right (R) and left (L) hands. The pattern is: R, L, R, L, R. The exercise ends with a double bar line and a repeat sign.

Tom's Taps

Musical notation for the 'Tom's Taps' exercise. It consists of a single staff with a 4/4 time signature. The notation shows a series of eighth notes with accents, alternating between the right (R) and left (L) hands. The pattern is: R, L, R, L, R. The exercise ends with a double bar line and a repeat sign.

Basic Drumline Warm-ups

4 Bases

Compiled By Michael Huestis

8 ON A HAND

Musical notation for the first warm-up exercise, '8 ON A HAND'. It consists of a single staff in 4/4 time, starting with a double bar line and a 4/4 time signature. The notation shows a continuous eighth-note pattern across the staff.

Musical notation for exercise 5, consisting of a single staff with a double bar line and a 4/4 time signature. The notation shows a continuous eighth-note pattern across the staff.

Bucks

Musical notation for the 'Bucks' warm-up exercise. It consists of a single staff in 4/4 time, starting with a double bar line and a 4/4 time signature. The notation shows a continuous eighth-note pattern across the staff, with accents (>) above each note. Below the staff, the letters 'R' and 'L' are placed under the notes to indicate right and left hand alternation. The sequence is R, L, R, L, R.

Double & Triple Beat

Musical notation for the 'Double & Triple Beat' warm-up exercise. It consists of a single staff in 4/4 time, starting with a double bar line and a 4/4 time signature. The notation shows a continuous eighth-note pattern across the staff, with accents (>) above each note. Below the staff, the letters 'R' and 'L' are placed under the notes to indicate right and left hand alternation. The sequence is R, L, L, R, R.

Musical notation for exercise 2, consisting of a single staff with a double bar line and a 4/4 time signature. The notation shows a continuous eighth-note pattern across the staff.

Hup - Dup

Musical notation for the 'Hup - Dup' warm-up exercise. It consists of a single staff in 4/4 time, starting with a double bar line and a 4/4 time signature. The notation shows a continuous eighth-note pattern across the staff, with accents (>) above each note. Below the staff, the letters 'R' and 'L' are placed under the notes to indicate right and left hand alternation. The sequence is R, L, L, R, R, R.

Musical notation for exercise 6, consisting of a single staff with a double bar line and a 4/4 time signature. The notation shows a continuous eighth-note pattern across the staff.

Tom's Taps

Musical notation for the 'Tom's Taps' warm-up exercise. It consists of a single staff in 4/4 time, starting with a double bar line and a 4/4 time signature. The notation shows a continuous eighth-note pattern across the staff, with accents (>) above each note. Below the staff, the letters 'R' and 'L' are placed under the notes to indicate right and left hand alternation. The sequence is R, L, R, L, R, L, R, L, R.

